



CWIND Taiwan

臺英風電



Crew Transfer
Vessel

CWind Pesanach 奔娜號

主要資訊

建造年份	2022	船籍	臺灣
船體結構	鋁 Aluminium	乘客	12 名
船員	4 名	客艙	4 床鋪 (只限船員)

規格

全長 (Overall Length)	27.1 公尺(m)
全寬 (Beam)	9 公尺(m)
吃水 (Draft)	1.72 公尺(m)

機械設備

主引擎 (Main Engines)	4部 Scania DI16 077m
推進器 (Propulsion)	4部 Hamilton HM521
發電機 (Generator)	2 Cummins onan 40 MDDCW

性能

最大速度 (Max Speed)	25 kn
平均速度 (Service Speed)	20 kn
油耗 (Fuel Used/Service Speed)	620 L/H
最大甲板載重 (Max Deck Cargo)	12 T
甲板面積 (Deck Area)	(前甲板) 50 m ² (後甲板) 15 m ²
甲板承載能力 (Deck Strength)	2 T/m ²

水、油箱容量

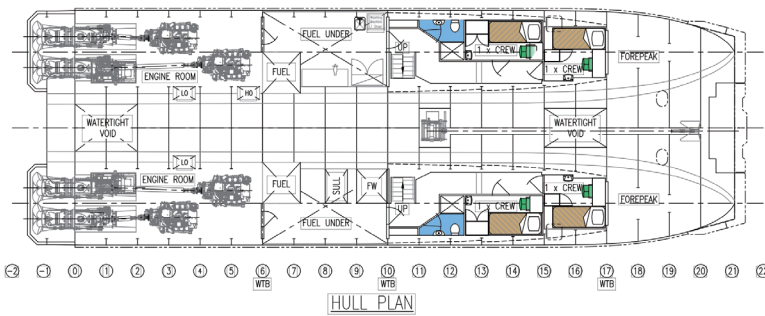
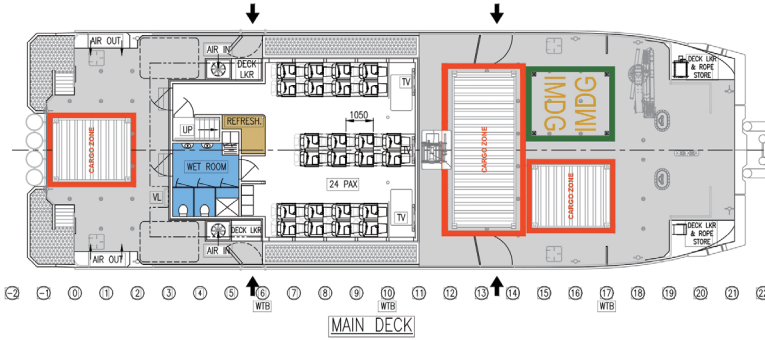
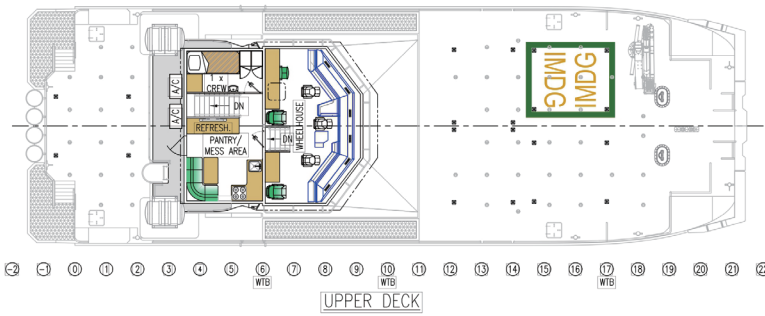
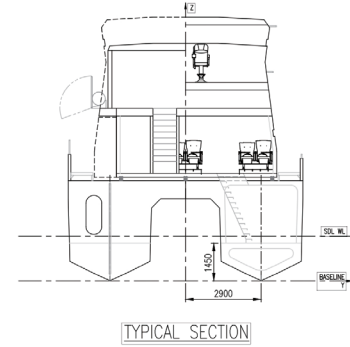
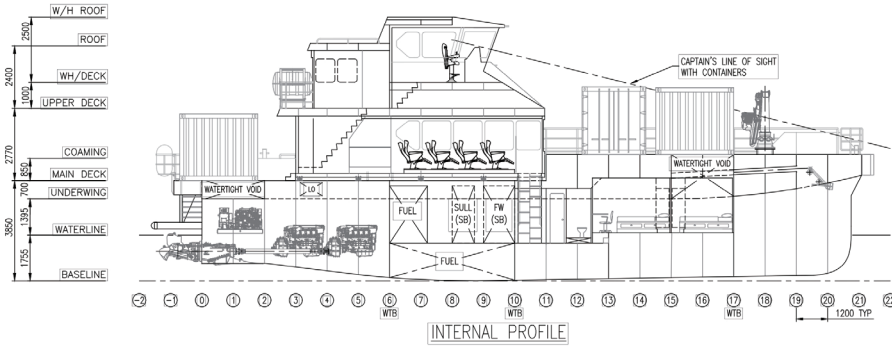
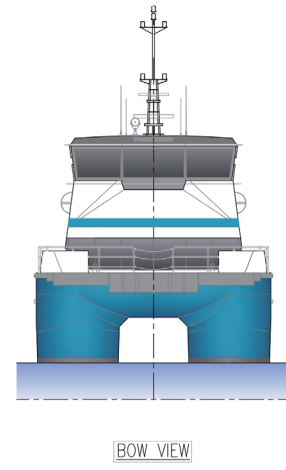
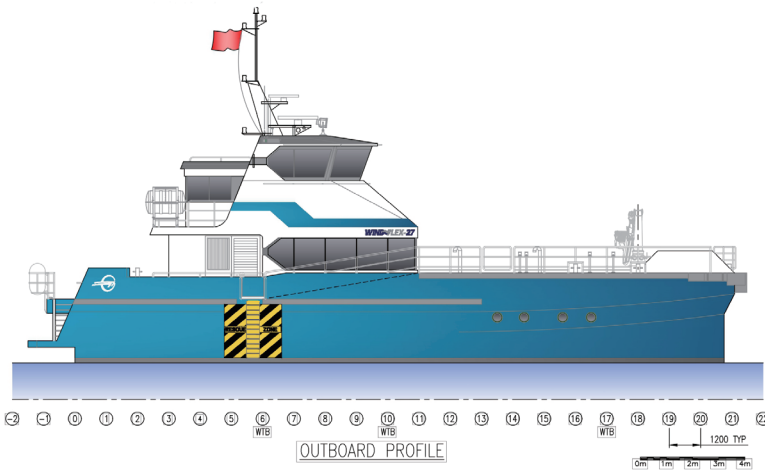
燃料油 (Fuel)	35,500 公升(L)
淡水 (Fresh Water)	3,500 公升(L)

導航與通信設備

雷達 (Radar)	雷達 1: Simrad R5024 12U/6XPHSC 雷達 2: Simrad Halo20+
電子海圖 (Electronic Charts)	Simrad ECDIS900 MK15
船舶自動辨識系統 (AIS)	Simrad V5035
羅盤 (Compass)	Riviera BAS1
高頻無線電 (VHF)	SAILOR 6222

甲板設備

集裝箱 (Container)	前方甲板: 4個10英尺(ft) 或 1個20英尺(ft) + 2個10英尺(ft) 後方甲板: 1個10英尺(ft)
起重設備 (Crane)	Deck Equipment PALFINGER PK23500M 1.74t@10.1M



Bureau Veritas Marine & Offshore
 Section 40246X.40247Y
 VU avec commentaires
 Singapore, 07-Sep-2021

[Electronic document]
 The authorised approving unit
 SPO/21/02564LXC

SPECIFICATIONS

OVERALL LENGTH (EXCL APPENDAGES):	27.1m
WATERLINE LENGTH:	24.9m
LOAD LINE LENGTH:	23.9m
BEAM (NOT INCLUDING SPONSONS):	9.0m
DRAFT (HULL):	1.4m
PERSONNEL:	24
CREW:	5
CONSTRUCTION:	ALUMINIUM
HULL:	ALUMINIUM
SUPERSTRUCTURE:	ALUMINIUM
FUEL OIL:	2 x 13 000 l
	2 x 4 750 l
FRESH WATER:	1 x 3500 l
SULLAGE:	1 x 2500 l
MAX DEADWEIGHT:	50t
GENSETS:	2 x CUMMINS OMAN 40MDDCW
MAIN ENGINES:	4 x SCANIA D116 077M
RATED POWER:	4 x 662kW @ 2300 RPM
PROPULSION:	4 x HAMILTON HM521

